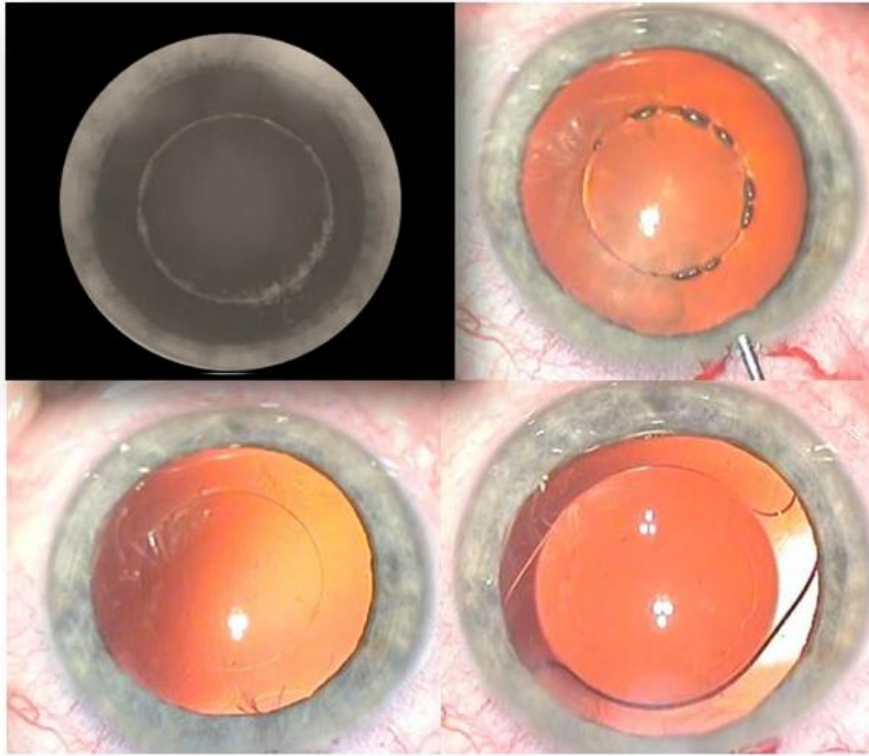
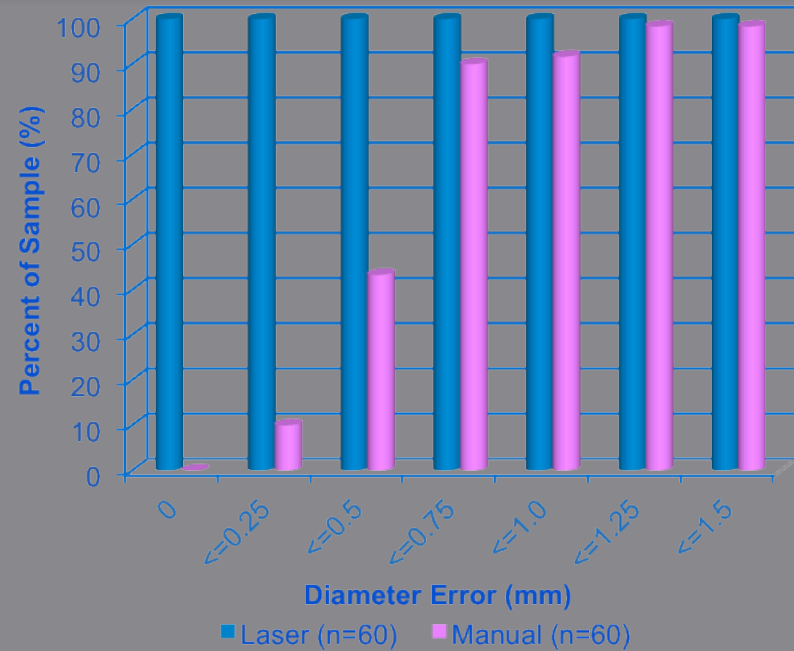


Refractive Capsulotomy

Optimized Effective Lens Position for Optimized IOL Performance

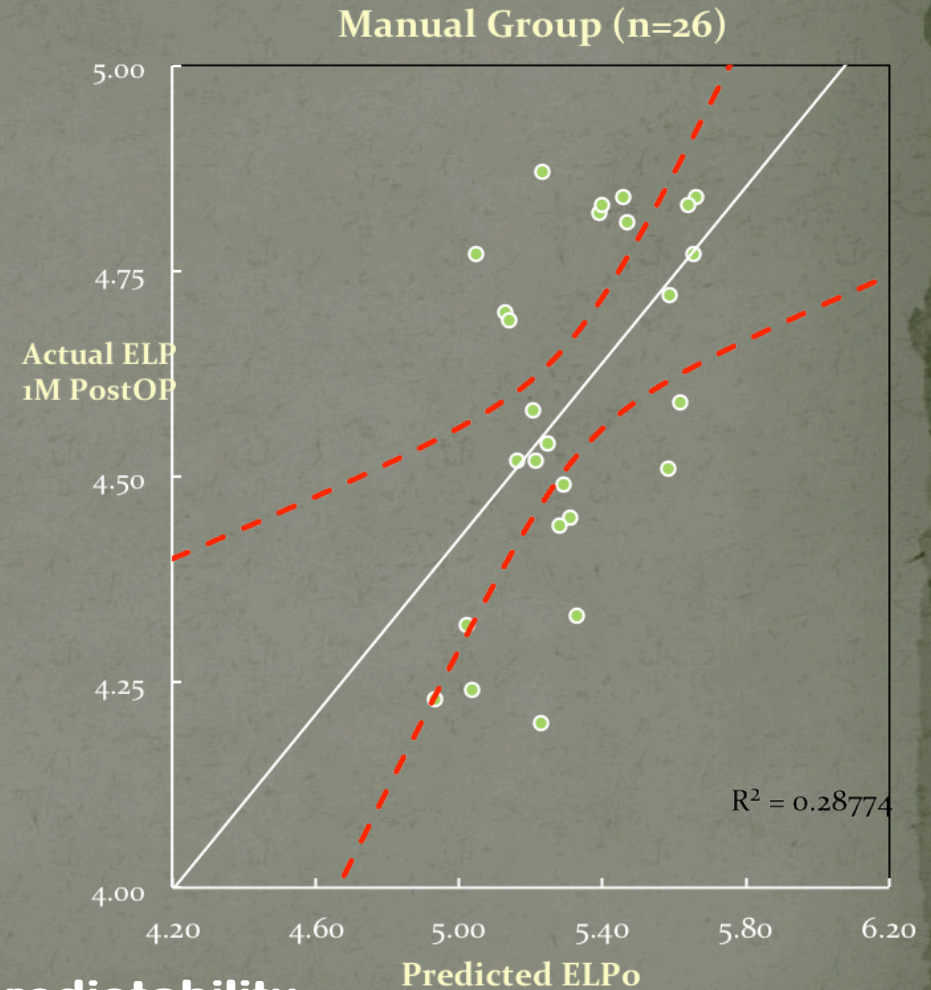
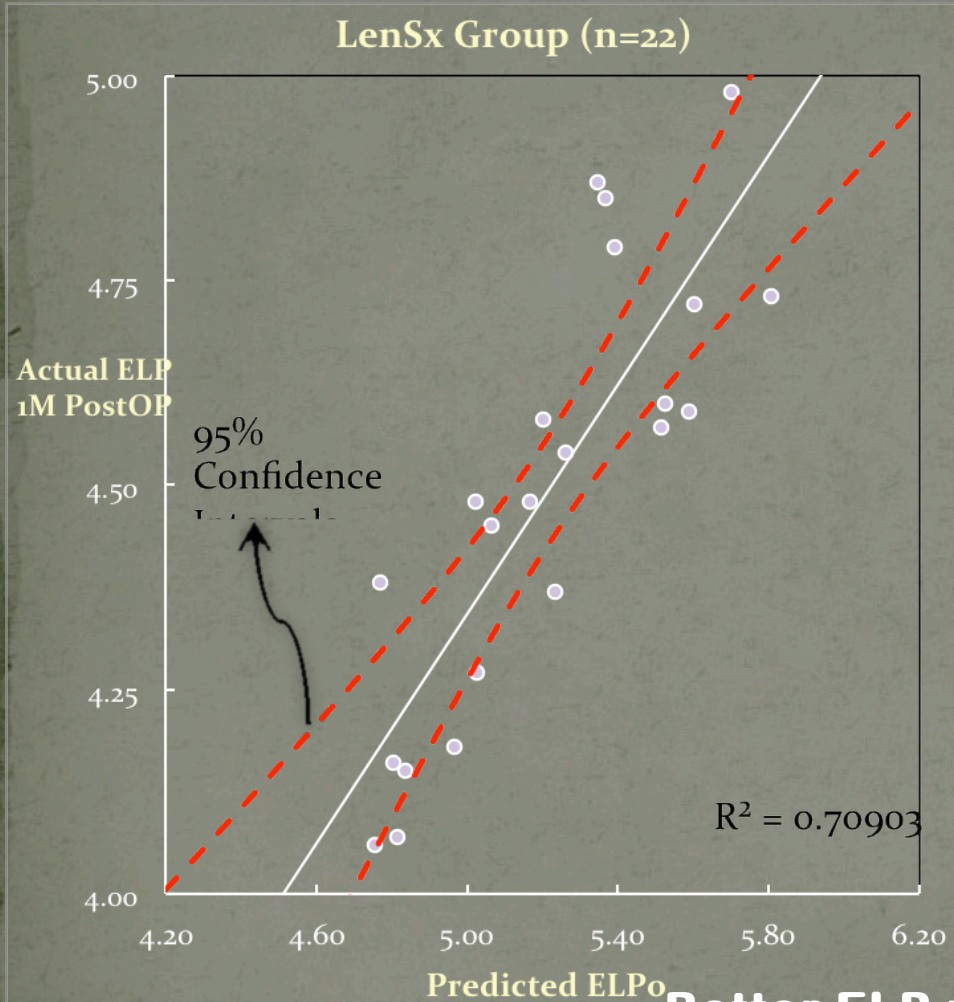


Capsulotomy Diameter Accuracy
(Absolute difference between Attempted and Achieved)



- 100% of LenSx procedures achieved an accuracy of ± 0.25 mm
- Only 10% of manual procedures achieved an accuracy of ± 0.25 mm
- No radial tears

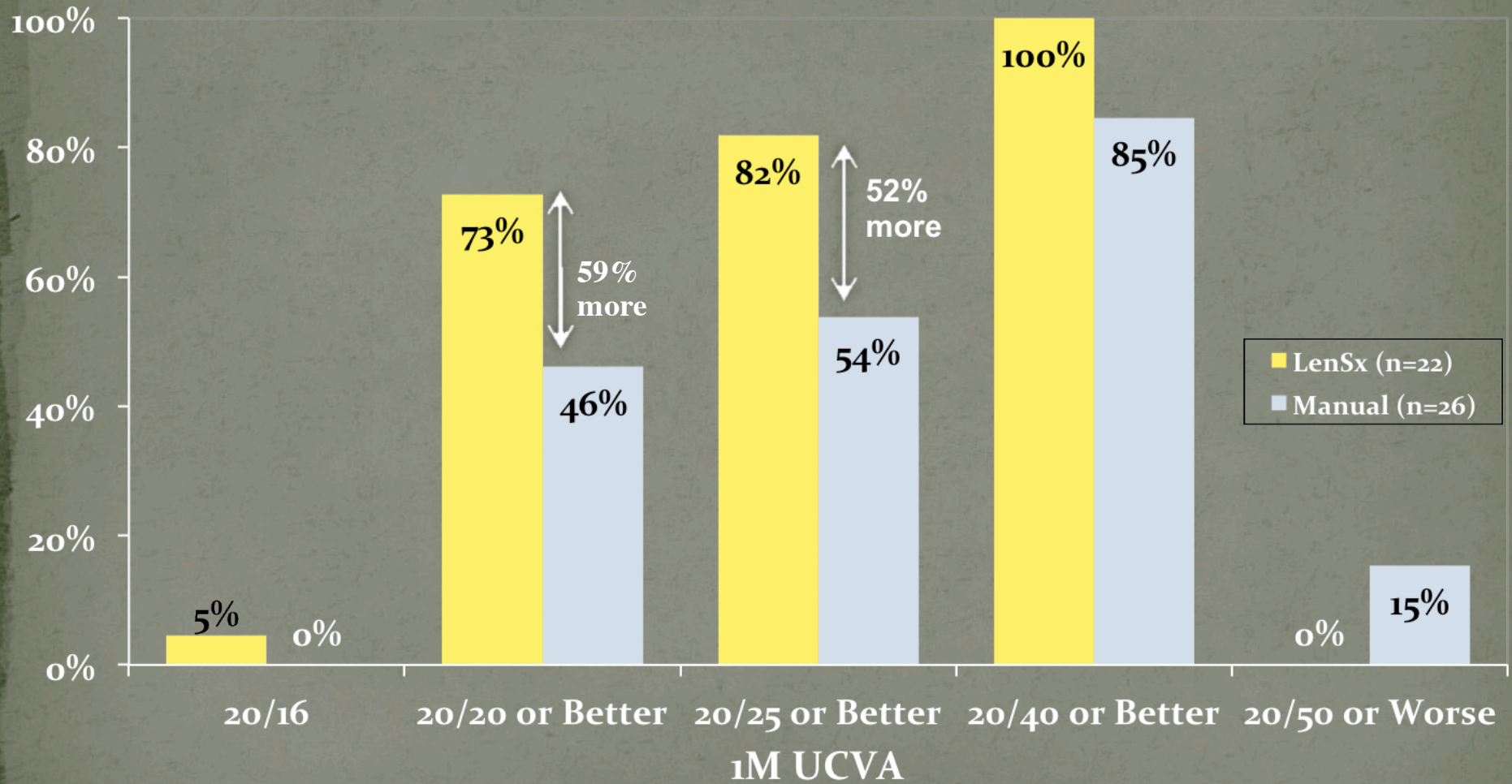
Actual versus Predicted ELP



Better ELP predictability

71% of the variable's variance result for the LenSx group Vs. only 29% for the manual group.

Efficacy Distribution



Conclusion

- Over 150 surgeons in 16 countries have performed surgeries
- Early Studies - LenSx Laser Group is Superior in ELP Predictability
 - More Predictable Refractive Outcomes (Target Refraction to 1 Month SEQ)
 - 1M UCVA better in Laser Group
 - Even after Calculating New Prediction Error based on Optimized Lens Constant from Study Data – Laser Outcomes were superior
- Improved Efficacy and Accuracy to Target Results similar across IOL Platforms
- Ongoing and future studies will include randomized study populations as well as larger samples and various IOL Platforms.